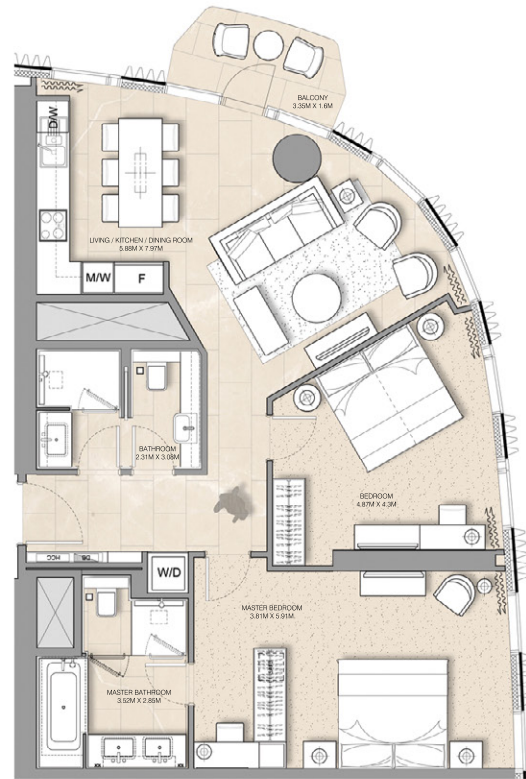




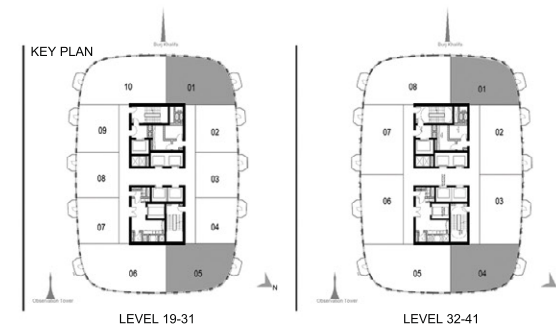
ADDRESS HARBOUR POINT

DUBAI CREEK HARBOUR



SERVICED APARTMENT 2 BEDROOM APARTMENT - T1-2A

LEVEL	UNIT NUMBER	AREAS					
		UNIT AREA		BALCONY AREA		TOTAL AREA	
		SQM	SQFT	SQM	SQFT	SQM	SQFT
TOWER 1							
19/F	1901	99.83	1074.56	3.16	34.01	102.99	1108.57
	1905	99.83	1074.56	3.16	34.01	102.99	1108.57
20/F	2001	99.83	1074.56	3.91	42.09	103.74	1116.65
	2005	99.83	1074.56	3.91	42.09	103.74	1116.65
21/F-31/F	2101-3101	99.86	1074.88	4.63	49.84	104.49	1124.72
	2105-3105	99.83	1074.56	4.63	49.84	104.46	1124.40
32/F-41/F	3201-4101	100.06	1077.04	4.63	49.84	104.69	1126.88
	3204-4104	100.04	1076.82	4.63	49.84	104.67	1126.66



FLOOR PLAN 1. All dimensions are in imperial and metric, and measured from finish to finish excluding construction tolerances. 2. All materials, dimensions, and drawings are approximate only. 3. Information is subject to change without notice, at developer's absolute discretion. 4. Actual area may vary from the stated area. 5. Drawings not to scale. 6. All images used are for illustrative purposes only and do not represent the actual size, features, specifications, fittings, and furnishings. 7. The developer reserves the right to make revisions / alterations, at its absolute discretion, without any liability whatsoever.

